

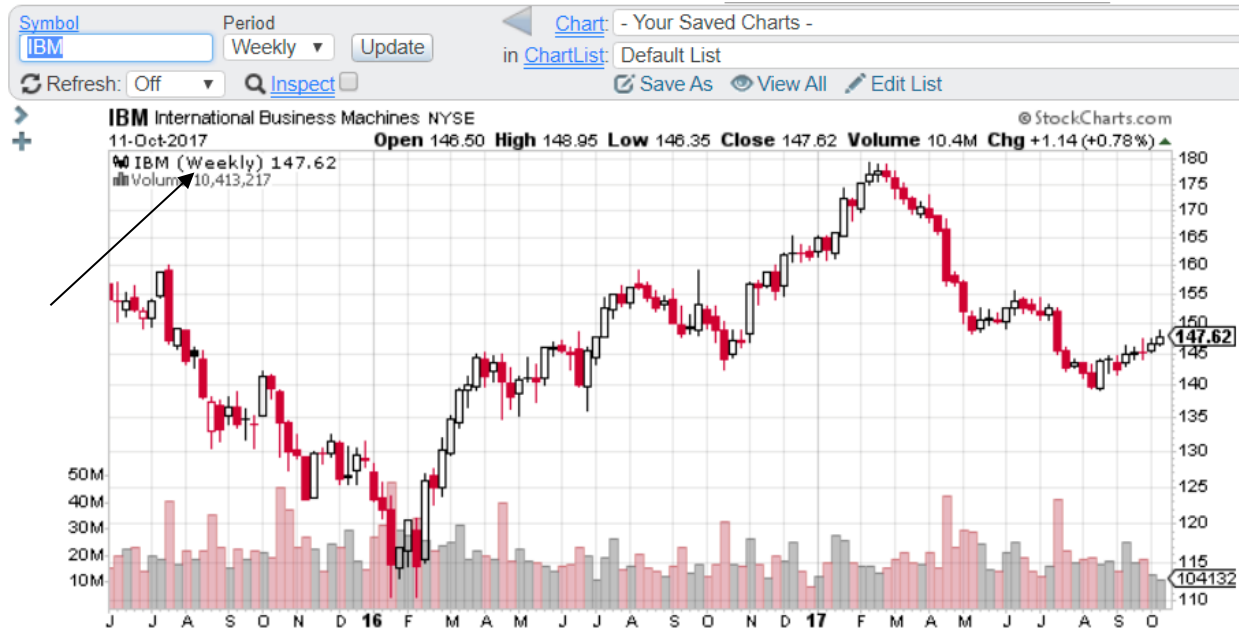
# NOTES FROM A PROFITABLE INVESTOR

## Chapter Five- Support and Resistance



# NOTES FROM A PROFITABLE INVESTOR

## Chapter Five- Support and Resistance



For the above two charts:

What would you say was the resistance and support levels for the stock price in the last 30 days?

In the last six months? The last year? Draw your support and resistance lines. Are there multiple possibilities? Draw in red for resistance and in blue for support.